

One - Shot! One - Kit!



— 주름치료 —

콜라겐,
엘라스틴 탄력섬유
생성촉진

— 흉터치료 —

손상세포재생
모공치료
여드름치료

— 생착률 증가 —

지방이식시
장기간 유지

— 항노화 —

면역력 개선
안티에이징
혈류 활성화

— 탈모치료 —

영양공급
탈모억제
모발재생

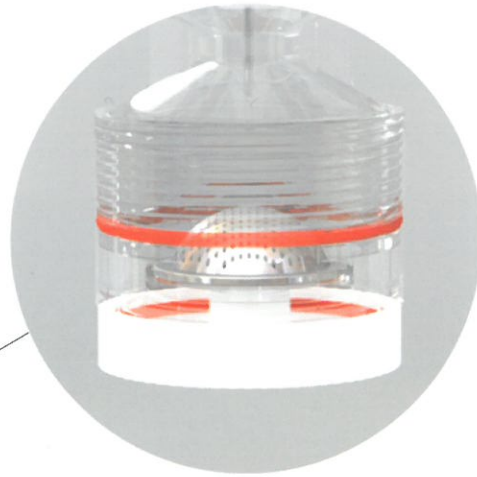
— Combine —

필러, 힐러
PDRN 등
효과 증진

BMC - 골수줄기세포 고농축 키트



- 100% closed system
- Bone marrow concentration rate is adjustable
- Perfect RBC isolation with an inter locking bar system
- You can see the buffy-coat with its bottle neck shape
- First in the world, built in bone marrow filter system



국내 제품 최초 보건복지부 승인(제허 16-221 호)
 연골결손환자에서의 자가골수줄기세포 치료술용(SZ085)
TriCell High Quality Stem Cell

Cell Count Data

	Sample Description	VOL (ml)	NCC(nucleated cell count) X 10 ³ /UL	MNC(mono nucleated cell) X 10 ³ /UL	Plt X 10 ³ /UL	CFU - ASSAY
Donar	Base line	4	17.23	6.55	75.0	
2	Concentration	4	153.99	63.50	569.0	
Increase above Baseline			9 X	10.5 X	7.5 X	

Source(Ajou university Hosprtal) : Bone marrow cell counting test report

Process (How to use)



1. Bone Marrow Aspiration



2. Loading Bone marrow to TriCeLL BMC kit



3. 1st Centrifuge



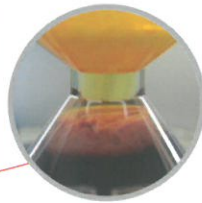
4. 2nd Centrifuge



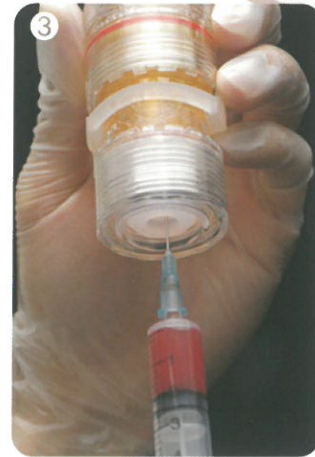
5. Extract final results (BMCs)

CC – 혈액줄기세포 고농축 키트

How to Use TriCeLL



You can see the buffy coat



- Raise buffy coat after 1st centrifuge and isolate RBC using RBC locking bar
- Image shows 3-level separation after 2nd centrifuge
- Insert the syringe through the PRP cap and harvest PRP (You can adjust the PRP density amount in the range from 1cc to 4cc)

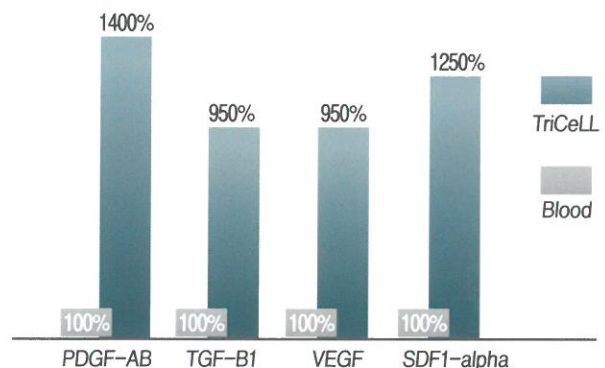
Platelet & Growth factors counting results

Blood: 30ml PRP: 3ml		Platelet count		Recovery rate(%)	WBC (10 ³ /ml)	VEGF (pg/ml)	TGF-beta1 (ng/ml)	SDF1-alpha (pg/ml)	PDGF-AB (pg/ml)
		Platelet count (10 ³ /ml)	Increase Above Baseline(X)						
Patient1.	Whole Blood	218	-	-	4.35	200	0.01	500	400
	PRP	1,973	9	91	24.58	2,000	0.18	18,000	6,000
Patient2.	Whole Blood	240	-	-	4.42	250	0.02	2,000	500
	PRP	2,125	9	89	53.3	2,600	0.19	2,500	7,000
Patient3.	Whole Blood	182	-	-	6.62	400	0.01	2,000	400
	PRP	1,752	10	96	40.86	1,900	0.16	22,000	3,500

Source: Aju university Hospital

Growth Factors In Platelet

- PDGF (Platelet derived growth factor)
 - Stimulates cell replication
 - Promotes angiogenesis
 - Promotes epithelialisation
 - Promotes granulation tissue formation
- TGF-β (Transforming growth factor beta)
 - Activated platelets and promotes degranulation associated with born development
- VEGF (Vascular endothelial growth factor)
 - Stimulates angiogenesis



Source: Aju university Hospital

줄기세포, 혈장, 적혈구의 완벽한 분리!
순도 높은 완벽한 결과물

줄기세포
 혈장
 적혈구

TriCell

TriCell A World first
 Three cells are in one kit
 [PCT No. 10-2011-0138589]

<p>Protection</p> <p>100%기밀구조 실현 줄기세포를 외부오염으로부터 완벽하게 보호</p>	<p>Safety</p> <p>KFDA, CE, JFDA, CFDA 국제적으로 인정받은 안정성</p>	<p>Technology</p> <p>줄기세포를 포함하는 유핵세포 분리, 농축기술 보유</p>
--	--	--

TriCell 전용 Centrifuge

제원

- 448.5(W) X 531(D) X 286(H) mm
- 18kg

EU Representative
 REV-MED International GmbH
 Einsteinstr. 167 81677 Munich, Germany



Korea Main Distributor
Bluemeditech co.,Ltd.
 109, Neungdong-ro 36-gil, Gwangjin-gu, Seoul, Republic of Korea

www.tricell.co.kr

